



V4 Series Low-cost Compact Industrial Quarter-turn Valve Actuators



The **Assured Automation V4 Series electric actuators** offer a simple and cost-effective solution for automated actuation of quarter-turn (90°) ball, and butterfly valves with torque requirements up to 300 in/lbs. These compact industrial actuators have external wire leads - eliminating the need to open the unit. The reversing motor with end of travel limit switches is enclosed in an epoxy coated aluminum housing with a NEMA 4/4X weatherproof rating.

SPECIFICATIONS

Materials:**Cover:** Epoxy coated aluminum**External Shaft:** Stainless Steel**Gears:** Steel**Indicator:** Glass filled polyamide**Direct Mounting to Valve:****ISO 5211:** F03 and F05**Drive Shaft:** 14mm female star**Electrical Connection:**

1/2" NPT conduit entry with external wire leads

Temperature Range:

0°F to 160°F

Enclosure Rating:

NEMA 4/4X weatherproof

Motor:

Single phase reversing motor with end of travel limit switches

Duty Cycle:**125 in/lbs. AC:** 75%**300 in/lbs. AC:** 25% or 75%**All DC:** 100%**Thermostat Controlled Heater:**

(optional) 3.5 W

FEATURES

- ISO 5211 mounting pad
- NEMA-4, 4X housing design for superior corrosion resistance
- Large visual position indicator clearly illustrates valve position
- Manual override - stainless steel stem with wrench flats for easy manual operation
- Fine adjust cams allowing 90° to 270° operation
- Prewired with leads through a 1/2" NPT conduit entry
- Ball bearing support providing greater reliability
- Heavy duty PSC motor with automatically re-setting thermal protector to prevent overheating
- High strength gears designed to AGMA standards and able to withstand stall torque conditions
- 15 A SPDT switches that stop the motor and divert power to external lines for indication or other function
- Permanently lubricated gear train
- Captive cover bolt. Prevents loss when cover is removed for adjustments

OPTIONAL FEATURES

*Many of these are **special order** with **extended lead times***

- 2 extra SPST switches (isolated) with independent adjustable cams
- 3-position setup to close the valve to a slower flow rate, allowing top off
Call for details
- Terminal strips to provide a termination point inside of the housing
- On-board relays, feedback sensors, and timers
Call for details
- Heater and thermostat to prevent condensation build-up and corrosion
Call for details
- Sealed leads to prevent moisture ingress
- Control boxes for standard and custom functions.

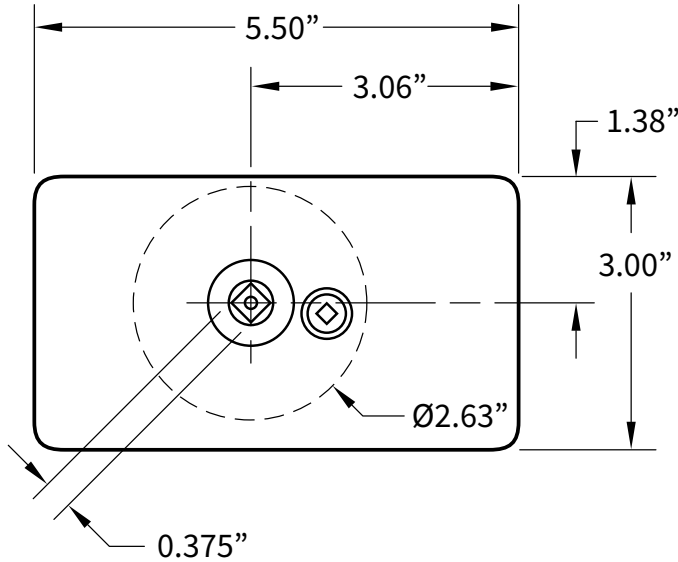


V4 Series

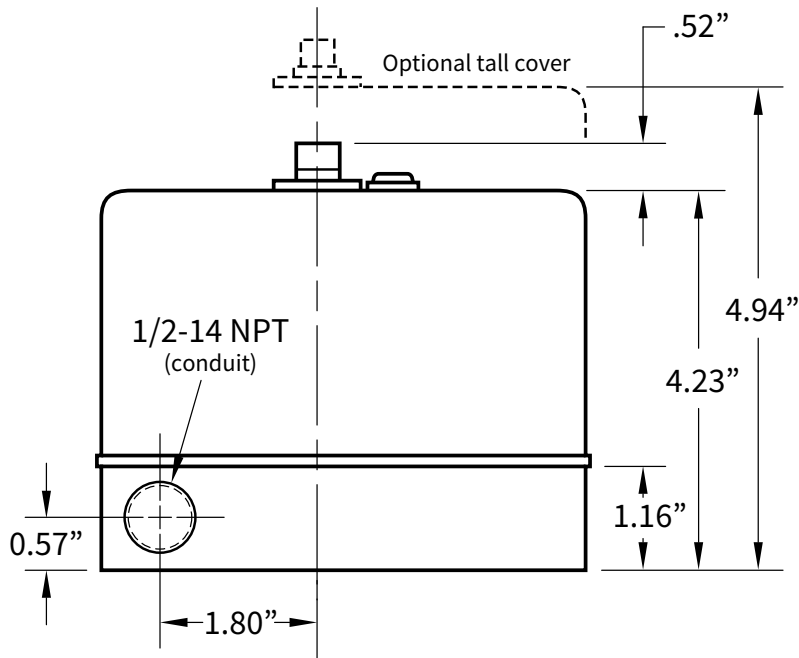
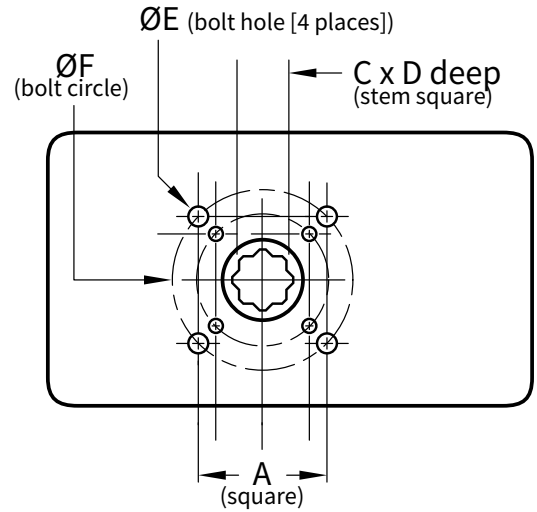


Low-cost Compact Industrial Quarter-turn Valve Actuators

DIMENSIONS



Dual F03/F05 Mounting Pattern



Dimension	F03	F05
A	25.4 mm (1.00")	35.4 mm (1.39")
C	9 mm (0.354")	14 mm (0.551")
D	19 mm (0.63")	19 mm (0.63")
ØE	M5 x 10 mm	M6 x 10 mm
ØF	36 mm (1.417")	50 mm (1.969")



V4 Series



Low-cost Compact Industrial Quarter-turn Valve Actuators

ORDERING INFORMATION

EV	1	S1	V1	-2XS
Series	Torque	Duty Cycle	Voltage	Options

Output Torque:

- 1 = 125 in/lbs.
- 3 = 300 in/lbs.

Duty Cycle:

- S1 = 75% (all AC units)
- S2 = 25% (300 in/lbs. AC units)
- S3 = 100% (all DC units)

Supply Voltage:

- V1 = 115 VAC
- V3 = 230 VAC
- V7 = 24 VAC
- V8 = 12 VDC
- V9 = 24 VDC

Options and Accessories:

*For all other options - please call 1-800-899-0553 to speak with a valve automation expert
 -2XS = 2 extra isolated SPST switches with adjustable cams.

If the V4 Series Electric Actuator does not fit your application, please consider another series in our comprehensive offering.

CE Series



R Series



S4 Series



K4 Series



B7 Series



Make it Easy!
Compare All Electric Actuators Now